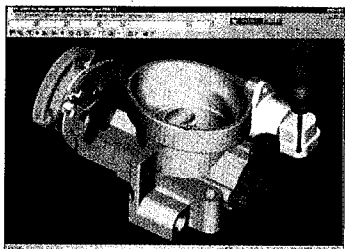


newsoftware



Direct CAD Interface

PC-DMIS v. 3.2 measurement and inspection software provides a direct CAD interface to such programs as CATIA; Unigraphics; Pro Engineer; SDRC; and the common CAD format, ACIS. A direct CAD interface eliminates the need for the software to translate the original CAD model in any way, assuring that accurate design data is used for part

programming. Users can create part programs directly on the CAD model, reducing programming time and improving accuracy.

Brown & Sharpe

www.brownsandsharpe.com

North Kingstown, RI Circle No. 165

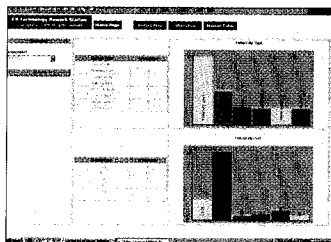
Vision System Software

The Rework Data Server (RDS) system—for the RTI-6520, AOI 2020 and XRV Vision Inspection Systems—generates a series of Web pages displaying printed circuit board data passed through an ODBC source to Web browsers such as Microsoft Internet Explorer and Netscape Navigator. The system also offers interactive product training, diagnosis, software upgrades and troubleshooting to vision system customers internationally using the Internet.

CR Technology

www.crtechnology.com

Aliso Viejo, CA Circle No. 166



Improved Process Performance

Powerway Suite 2000 promotes teamwork and enhances performance through the creation, control, and sharing of documents, data, and knowledge. It can help bring an organization together to overcome the problems caused by a lack of communication and collaboration, customer complaints, inferior product quality, scrap and rework, missed market opportunities and lost sales. Powerway Suite 2000 also provides paperless document and data control, advanced quality planning, configuration management, integrated quality management and real-time factory floor data collection.

Powerway Inc.

www.powerwayinc.com

Indianapolis, IN Circle No. 167

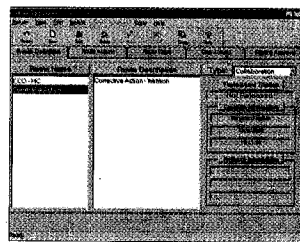
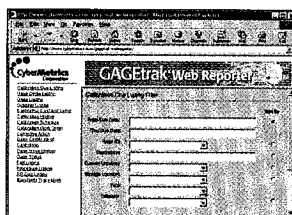
Calibration Software

GAGetrak Web Reporter allows anyone in a company to easily generate GAGetrak reports using a Web browser while also permitting other facilities, customers and suppliers to run reports. Its server-based security ensures robust yet flexible access to data. This complete package includes ASP source code modules that provide flexibility to change field names, modify report designs or even publish reports in a variety of languages. GAGetrak Web Reporter requires GAGetrak 4.0 or higher.

CyberMetrics Corp.

www.cybermetrics.com

Sterling Heights, MI Circle No. 168



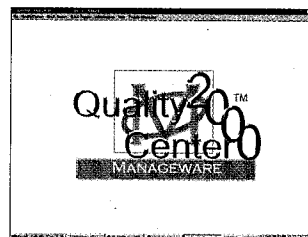
Collaborative Workflow

MASTERFlow is an add-on document workflow/collaboration product for MASTERControl, a leading client, server and Web-based document control product for ISO 9000-, QS-9000- and FDA-regulated companies. MASTERFlow gives manufacturing companies the ability to embed automated collaborative workflow requirements into current business processes. The software is extremely flexible and easy to use. The workflow combines collaborative draft documents and revisions with online reviews by multiple users, cross-functional departments, other plants and the entire supply chain. Benefits include increased productivity and faster document execution to raise overall product quality and guarantee secure document management and control.

Document Control Systems

www.mastercontrol.com

Salt Lake City, UT Circle No. 169



Corrective Action Software

QualityCenter 2000 is a core corrective-action software application that currently ships with CustomerCenter, a complete customer corrective-action software solution. QualityCenter 2000 is available as a stand-alone or network version and operates on Windows 95, 98, 2000 or NT 4.0. The network version can be shipped with a Microsoft Access 2000, Microsoft SQL Server or customer-selected back-end database engine. Advanced features include built-in corrective action forms (7D, 8D, etc.), built-in reports, history options, customer selection type, e-mail and more. QualityCenter 2000 is customizable for your facility or industry.

Manageware LLC

www.manageware.net

Alpharetta, GA Circle No. 170